

INTRODUCING KENISTON

This leaflet introduces Keniston Housing Association by telling you about what we do, how we work, our staff, and our board.

We are a housing association with over 800 properties in London and the South East. Our aim is to house people who find it difficult to rent decent accommodation or buy a property.

Our values

We aim to meet housing need, provide good-quality well-managed homes, and give the service residents want. Our values are respect, openness, accountability, honesty and excellence.

Governance

Keniston is overseen by a governing Board. Members of the board are skilled and experienced people who give their time to govern the association. The Chair of the board receives an annual fee and all members can claim reasonable expenses, for travel costs for example. There are up to three places on the board for tenant members.

The board is responsible for appointing our Chief Executive and they meet five times a year joined by our senior management team.

There are strict rules for board and staff about conduct and avoiding conflicts of interest. This covers payments or benefits they can receive, including, for example, the circumstances in which a tenancy can be granted to board members, staff or their relatives. These restrictions are in place to reassure everyone that the way we operate is fair.

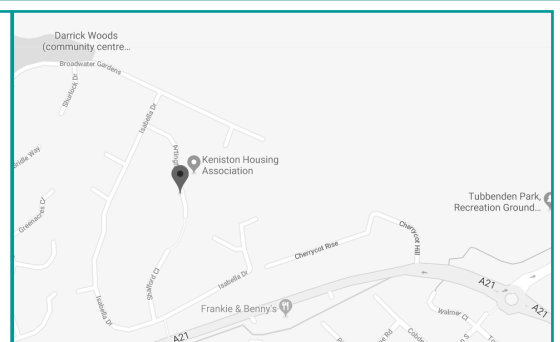
We are regulated by The Regulator for Social Housing; our registration number is L1965. We are a registered provider of housing also registered with the Financial Conduct Authority as a Co-operative and Community Benefit Society, number 19475R. We are a member of the National Housing Federation which represents the social housing sector.

Areas we cover

Our properties are in Islington, Lambeth, Southwark, Croydon, Bexley, Bromley and Crawley. Many of the properties are flats, but there are houses in Bromley, Lambeth, Southwark and Crawley. Some of the flats are 'sheltered' – these are for older people and have extra support services, usually provided through a Sheltered Scheme Manager.

Our office

The office is in Farnborough, Kent, between Orpington and Bromley, about 4 miles from junction 4 of the M25. It is situated on Keniston's largest estate, known as Darrick Wood, which consists of nearly half of our properties.



INTRODUCING KENISTON

Our staff

We currently have nearly 50 staff. About half of these are office-based, the others are based on our estates, with jobs such as sheltered scheme managers, caretakers, cleaners and gardeners. Many staff are part-time or job share. Office staff work in four teams – Housing Management, Property Services, Finance and Customer Services

How we work

New tenants are either referred to us from local authorities or a small number of other organisations which deal with people in housing need (we call these referral agencies). We only hold a waiting list for sheltered flats for older people, and a limited waiting list for one-bedroom and studio flats for people on a low income. We occasionally have to close the waiting lists due to high demand.

Annual report

Each year we publish an annual report on our performance which is sent to you and you can also view it on our website.

Are you online?

Yes you can find us through a variety of ways online. Please visit our website www.kenistonha.co.uk where you will find lots of general information and help for residents. You will also find us on social media, just search Keniston Housing.



What can I expect when I contact you?

We aim to provide you with an excellent service and we set ourselves the following standards. Staff will be courteous and polite and will give their name.

We aim to return phone calls as soon as possible, but always within two working days. We will confirm information in writing if you would like us to. We will reply to emails/letters within 10 working days. After you contact us, we will tell you what action we plan to take, and give our reasons. If necessary, we will visit you at home at a convenient time or arrange a confidential meeting away from your home.

If there is a Caretaker or Sheltered Scheme Manager on the estate where you live, you can ask them about matters to do with your estate.

If you have any questions you can call our Customer Services Team on 01689 889700.

Please note that many staff have to make visits away from the office and we also have a number of meetings in the office. This means that the person you want may not be available when you phone. However, you can always leave a message for someone to phone you back.

Address: Keniston Housing Association
13 Artington Close, Farnborough, Kent BR6 7UL

Phone: 01689 889700

Email: enquiries@kenistonha.co.uk

Opening hours: 9am to 5pm Monday to Friday, except bank holidays. We will tell you if we plan to close the office on any other days. Occasionally, the office is closed for staff training, but phone lines will stay open. You can also leave a message on the answerphone out of hours. For details of the out-of-hours emergency repair service – see your handbook leaflet: *Repairs and maintenance*.

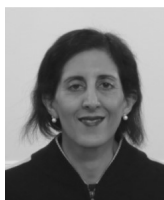
The Board

Emma Keegan – Housing Professional (Chair)



Emma has more than 20 years experience working in the housing sector, most recently as Managing Director – Rochford for Sanctuary Housing. She is an experienced board member who joined Keniston as Chair in 2019. She holds Post Graduate Diplomas in housing, management studies, and systems thinking and practice. Emma is also a member of the Chartered Institute of Housing.

Shehla Husain – Deputy Director, Home Office (Co-Vice Chair)



Shehla works for the Home Office on national resilience in the Fire sector. Prior to this Shehla worked for the Department for Communities and Local Government for 10 years. During her time there Shehla took the Housing and Regeneration Bill through Parliament to Royal Assent in 2008; set up the Homes and Communities Agency; and delivered the Supporting People Programme. Previously, Shehla worked for two other Government Departments; the Housing Corporation; and charities. Shehla became Co-Vice Chair at Keniston in 2015.

Peter Voisey – Solicitor (Co-Vice Chair)



Peter is a qualified solicitor of over 28 years' standing and has been practising as a partner in a large City law firm for many years, specialising in capital markets and finance. His practice includes advising on bond issues and related finance transactions for housing associations. Peter became Co-Vice Chair at Keniston in 2015.

Barry Luhmann – Head of UK Mortgage Market Intelligence, international asset management company (Chair of Audit and Risk Committee and Treasurer)



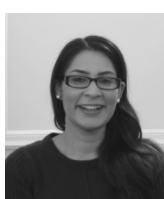
Barry is Head of UK Mortgage Intelligence at Black Rock Asset Management. He has a deep knowledge of the UK residential mortgage market having worked in the retail financial services industry for 22 years, including 18 years at Lloyds Bank. Barry is a qualified accountant and holds a certificate in mortgage advice and practice. Barry is currently the Chair of the Audit and Risk Committee and the Treasurer at Keniston.

Simone Bailey – Director of Train Service Provider



Simone is a member of the Royal Institute of Chartered Surveyors and has worked at Abellio Greater Anglia Ltd (a train operating company) as Asset Management Director since 2012. As Asset Management Director she has full responsibility for improving customer satisfaction and driving value from 132 stations across East Anglia. Prior to that she worked at Network Rail Property as Retail Director and then Commercial Director.

Seema Jassi – Director of Strategic Planning



Seema spent a number of years working in the NHS as a clinical auditor and has a Master's degree in mental health studies. She transitioned to a career in social housing in 2008 where she led on a range of risk management and compliance functions across three providers. Seema observed the crucial support offered by housing associations to families and individuals in significant housing need during this period, and upholds and endorses the values of such organisations, and this prompted her to join the Keniston Board in 2014. In 2015, Seema was appointed as Head of Risk and Assurance at Action for Children, a national children's charity, but more recently has taken up a position as Director of Strategic Planning to lead on the delivery of the charity's corporate strategy and business plan.

The Board

Sally Rice – Independent Housing Consultant



Sally currently works as an independent housing consultant. She previously worked for Moat, a leading South East Housing Association, in various senior positions and for the last 9 years as Director of Development. During this time she was responsible for the delivery of substantial new affordable housing programmes and estate regeneration projects. She has also worked for a major national developer in land acquisition and in Local Government. She is a qualified planner and member of the Royal Town Planning Institute and is also a member of the Chartered Institute of Housing.

Sheila Sackey – Service Delivery Manager, Westminster Council



Sheila is an experienced local government practitioner with over 10 years industry experience in performance management improvement and commercialisation of public sector activities. As part of her current role at Westminster Council she is responsible for delivering the staff engagement plan for the Growth, Planning and Housing Department. In her previous role with Westminster Council, she was responsible for the monitoring its housing management provider, CityWest Homes. Sheila's track record includes improving operational effectiveness and performance across a number of services in multi-stakeholder environments by 19% and she has successfully assisted CityWest Homes to reduce their complaints numbers by more than 50%. In her previous role, she worked on Licensing policy and Private Sector Housing policy with the Local Government Association. She has an MSc in Public Policy and Management and a LLB Law degree.

Lucy Worrall – Research and Public Policy Manager, Peabody



Lucy has worked at Peabody, one of the oldest and largest Housing Associations in London, since November 2017. She is responsible for leading on Peabody's strategic research programme and public policy work. Previously Lucy worked as a Consultant at Altair where she supported on a number of service, strategy and governance reviews. Lucy has also achieved a distinction in her Postgraduate Certificate in Housing Practice at Westminster University.

Details of our housing

Housing—Inner London

Islington

36 flats for families and single people

52 flats for families and single people

Southwark

51 flats for families and single people

7 family houses

Lambeth

10 family houses

Housing—Outer London

Purley, Surrey

24 flats for families

Housing—Outer London

Farnborough, Kent

253 family houses

66 flats

50 sheltered flats for elderly people

Bickley, Kent

45 flats for over 50's

35 flats for elderly people

39 flats for families and single people

1 house

Bexley, Kent

44 flats for families and single people

51 sheltered flats for elderly people

Housing—Outer London

West Sussex, Crawley

16 family houses

12 flats for single people

39 sheltered flats for elderly people

We manage some leasehold properties.

Bexley – 16 flats

Croydon – 12 maisonettes

Islington – 9 flats

Southwark – 2 flats

Hard to read?

If you would like this document in another format, such as large print or a coloured background, or if you would like this or any of our leaflets translated into another language, please contact our office:

Address: Keniston Housing Association
13 Artington Close, Farnborough, Kent BR6 7UL

Phone: 01689 889700

Email: enquiries@kenistonha.co.uk